

Burrells Wharf Square, London, E14 3TJ

A characterful warehouse conversion two double bedroom apartment in Grade II listed riverside development. The property boasts a generous reception room featuring exposed beam and bricks, two private balconies, a well kept kitchen, two double bedrooms, and a family bathroom. On-site benefits include allocated underground car parking, 24 hrs concierge, access to gymnasium, sauna and heated indoor swimming pool, as well as communal landscaped gardens.

- Heating Including Service Charge
- Grade II Listed Warehouse Conversion
- Riverside Development
- Underground Car Parking Space
- 24hrs Concierge, Swimming Pool, Gym and Sauna
- Two Private Balconies

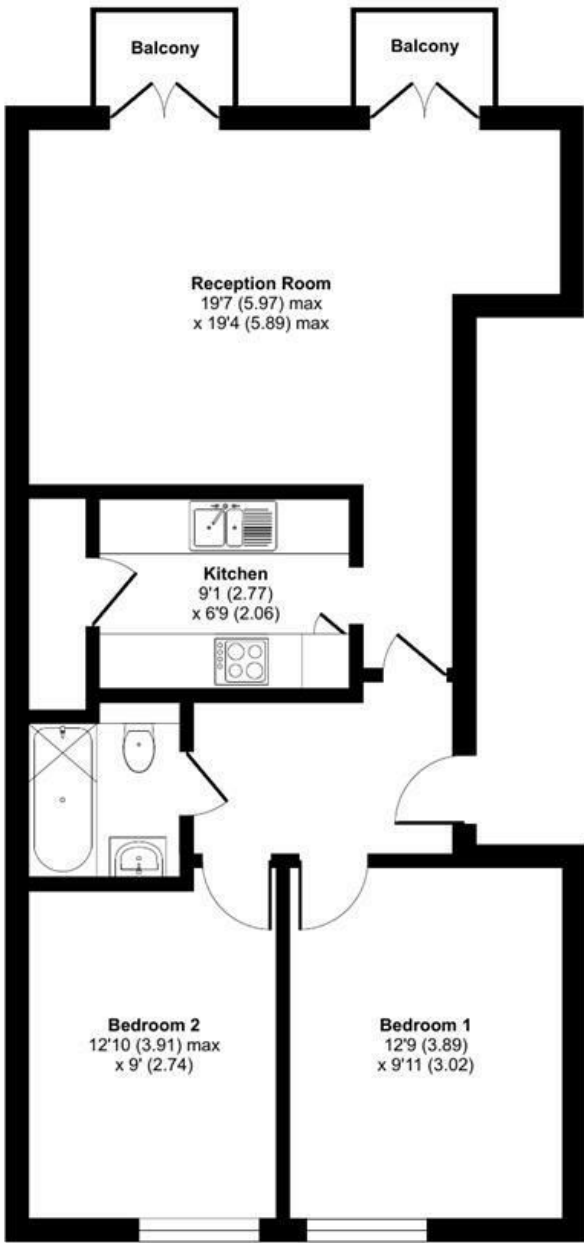
Alex & Matteo
ESTATE AGENTS

£2,500 Per month

Burrells Wharf Square, London, E14

Approximate Area = 685 sq ft / 63.6 sq m

For identification only - Not to scale



FIRST FLOOR

Alex & Matteo
ESTATE AGENTS



**Certified
Property
Measurer**

Floor plan produced in accordance with RICS Property Measurement Standards incorporating International Property Measurement Standards (IPMS2 Residential). © nitchcom 2023. Produced for Alex & Matteo Estate Agents. REF: 992857

Energy Efficiency Rating		
	Current	Potential
Very energy efficient - lower running costs		
(92 plus) A		
(81-91) B		
(69-80) C	76	79
(55-68) D		
(39-54) E		
(21-38) F		
(1-20) G		
Not energy efficient - higher running costs		
England & Wales		
EU Directive 2002/91/EC		